

Monitor Print

Print Management System

Improve operational efficiency by monitoring and controlling print

- Create print rules for your users
- Reduce administration costs and printing wastage
- Improve document security
- Benefit from the flexibility to work the way you want
- Enhance governance with full transaction recording and reporting
- Encourage sustainability by lowering page counts
- Bill end users for print services



Monitor Print

Print Management System

Monitor Print Solution

Monitor Print is a sophisticated and flexible print management solution, but is simple to install, configure and use. Key features include -

- Notifications are pushed to client popup applications, rather than popups polling the server constantly, decreasing network traffic and speeding up the user popup response times
- Fast and efficient communications between components of the solution
- Deletes inactive jobs from the queues after a predetermined period - this is set on a queue by queue basis
- Centrally managed details of system wide print jobs means fast retrieval of job information for users with little network load
- Supports PCL5, PCL6 (PCLXL), Postscript, HPGL, HPGL2, CPCA, KIP, OCE
- Both EMF and RAW spool formats are supported, so there is no need to disable enhanced printer features

Print Queue Management

Queue managers are installed on each print server on the site. Features include -

- Pausing and releasing jobs
- Analysing print jobs, counting the pages and detecting colour information
- Option of saving print job information for analysis

There are several different queue behaviour options depending on requirements -

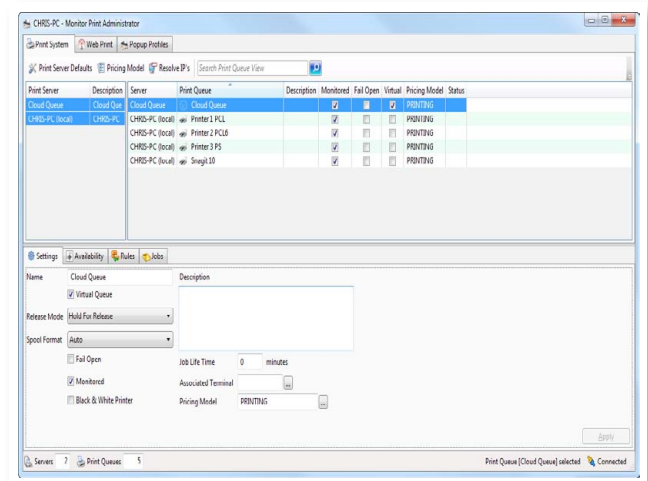
- Popup: Trigger a workstation popup
- Popup then Hold: Trigger a popup for easy code searching and entry, but securely release the job at the MFP
- Hold for Release: Print release at terminal, or pull printing
- Popup or Release: The print job will automatically resume to print if a popup client matching the job has not subscribed to the print manager
- Silent: Just print the job and account for the activity - No user notification
- Audit: Does not require a user to exist in Supervisor Net before they print on site

Rule Builder

Monitor Print's powerful rule builder allows organisations to create their own customised rules for users to adhere to, such as default to black and white and double-sided printing by intelligently managing print queues. Using print rules allows organisations to ensure that users are in-line with their printing policies.

Print rules are created using a simple to use wizard. Once a rule has been created, rules can be assigned to various users, departments or sites.

An interactive popup can be created with Monitor Print's rule builder. This allows organisations to send users a message asking them a question. Based upon their response, trigger an action.



Print Client

The Print Client application is installed on the end-user's computer. Features include -

- Provides a print pop-up
- Supports both PC and Mac
- Allows job ownership to be changed, in a public printing environment
- Enables users to search for and assign costs of print jobs to department, client or matter codes
- Displays a summary of the print job to the user, with cost and print information before the job is printed
- Displays the user's balance and gives the option to delete or cancel the print job
- Organisations can create and configure multiple popup profiles for users based on their various requirements

Monitor Print is a powerful and flexible print management system that controls printer and MFP usage, providing the organisation the ability to identify, control and minimise the cost of printing. Monitor's print solution records the details, including date, time, device number, quantity and cost of each print job, **preventing waste and abuse, improving efficiency, reducing costs and enhancing our environment.** Monitor Print offers a powerful tool for printing costs to be recovered from the user or simply recorded against a department, client matter or cost centre.

Monitor Print provides detailed reporting and auditing, and quota can be set for department or staff budgets. Students and staff can retrieve their printing by swiping their card at a Print Release Terminal or from a Print Release Station in high use public areas. By releasing jobs only into a user's hands, duplicates and unnecessary print is dramatically reduced. This also **improves document security.**

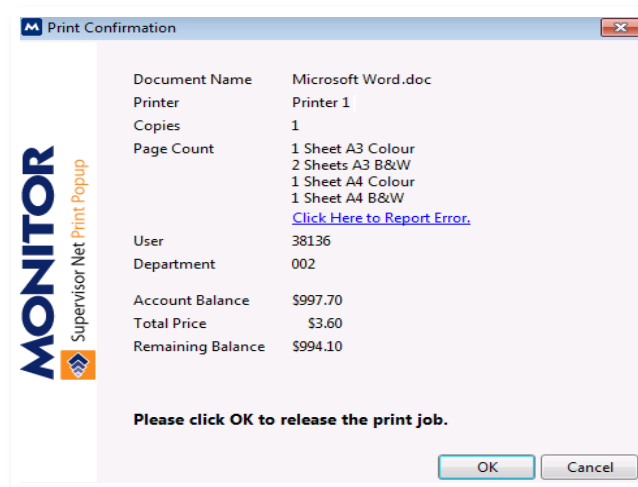
Key Benefits

For Users

- A popup shows the print job's cost, page count and other attributes, giving the user the choice to cancel a print job or send to a printer. Supports both PC and Mac users
- The user can see their account balance before printing jobs
- Print jobs are processed quickly, either directly to the print queue or to a Print Release Station for confidential and fast subsequent release
- Precise charging options are available based on sheets and impressions rather than just pages
- Allows the user to delete duplicate print jobs at a Print Release Terminal or Station
- Provides document security, as jobs are not printed until the user is ready to pick them up
- Pull printing and follow me printing, where queued print jobs may be securely released to the printer that best suits the user at the time

For You

- Easy to install and administer
- Scalable to the site as it can be installed on multiple print servers
- A Cloud Queue is used when users submit print jobs. The cloud queue stretches across an entire site with no configuration required.
- Does away with the hassle of configuring network or operating systems as it operates across different domains or workgroups with no further configuration required
- Supports user quotas, that can be configured to allow quota spend with rules; for example, on black and white, but not colour
- Queues can be marked as unavailable for a predetermined amount of time, or permanently, or have jobs automatically routed to another printer
- Highly flexible pricing models accurately bill end users for print services
- Highly flexible rules system to process print jobs according to the site's policy (i.e. high volume jobs always in duplex and black and white, or routed to a high volume printer, or use of colour for some but not others)
- Print administrators can delete, change or move jobs from within the user interface
- Pull printing and follow me printing simplifies the setup of your print system, while maintaining convenience for your users
- Popup Profiles allow a site to have multiple popup profiles configured so that various groups of users can have a popup customised to their requirements



Print Release from Terminals

Users can release their print jobs once they are standing in front of the printer/ MFP, providing convenience and the security that another user won't accidentally pick them up.

Monitor's hardware terminals or embedded terminals allow the user to scroll through their list of jobs, releasing and deleting as desired or alternatively releasing all jobs as soon as the user is authenticated on the terminal.

Print queues and terminals (on the MFPs) are consolidated to a single identifier. This enables reports to be run which have printing, faxing and scanning grouped together by the MFP.

Print Release Station

The Print Release Station application is designed for high use or public areas where a user is able to view jobs held on multiple print queues and may release those jobs to one of several different printers.

Offline Options

Monitor Print provides a Fail Open option that gives continuity of service to the end user by allowing the system to print any jobs during a system failure. During the offline mode, users are billed for any print activity once the system returns to service. Alternatively a Fail Closed option is available that will pause all jobs until the system is restored.

Print Release Terminal Hardware - Options

MB206 Terminal



MB526 QWERTY Terminal



AL7000 Interactive Kiosk



AL9000 Interactive Kiosk



PC



Supervisor Embedded Applications

Please contact us for details of the various embedded print options we have available.

Monitor Print Requirements

- .Net framework 3.5 and 4.0 are required for the server components (including each print server)
- .Net 4.0 (Client Profile or better) is required for each client workstation running the Print Client application

Providing cost effective, innovative, secure transaction management technologies to education and corporate customers globally.
